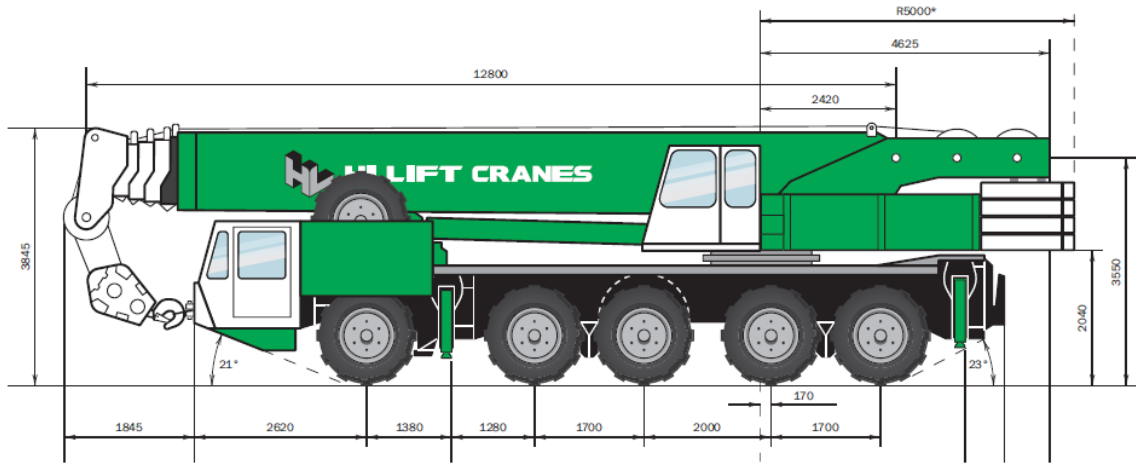


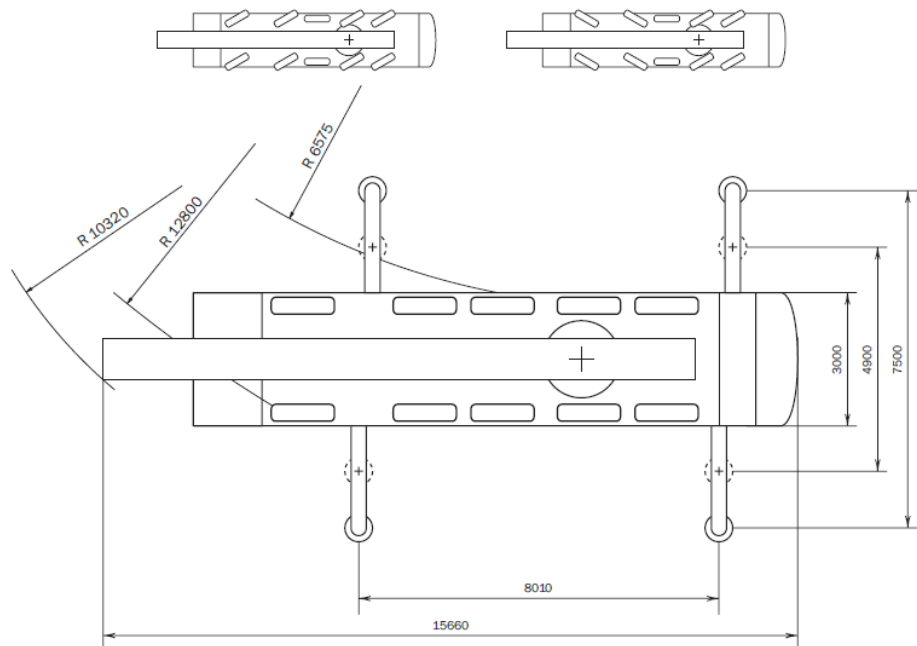


DEMAG AC435 150-TONNE

DEMAG AC435 150-TONNE



Width with more than 27 t of counterweight: 5.0m, tail swing: 5.25m





DEMAG AC435 150-TONNE



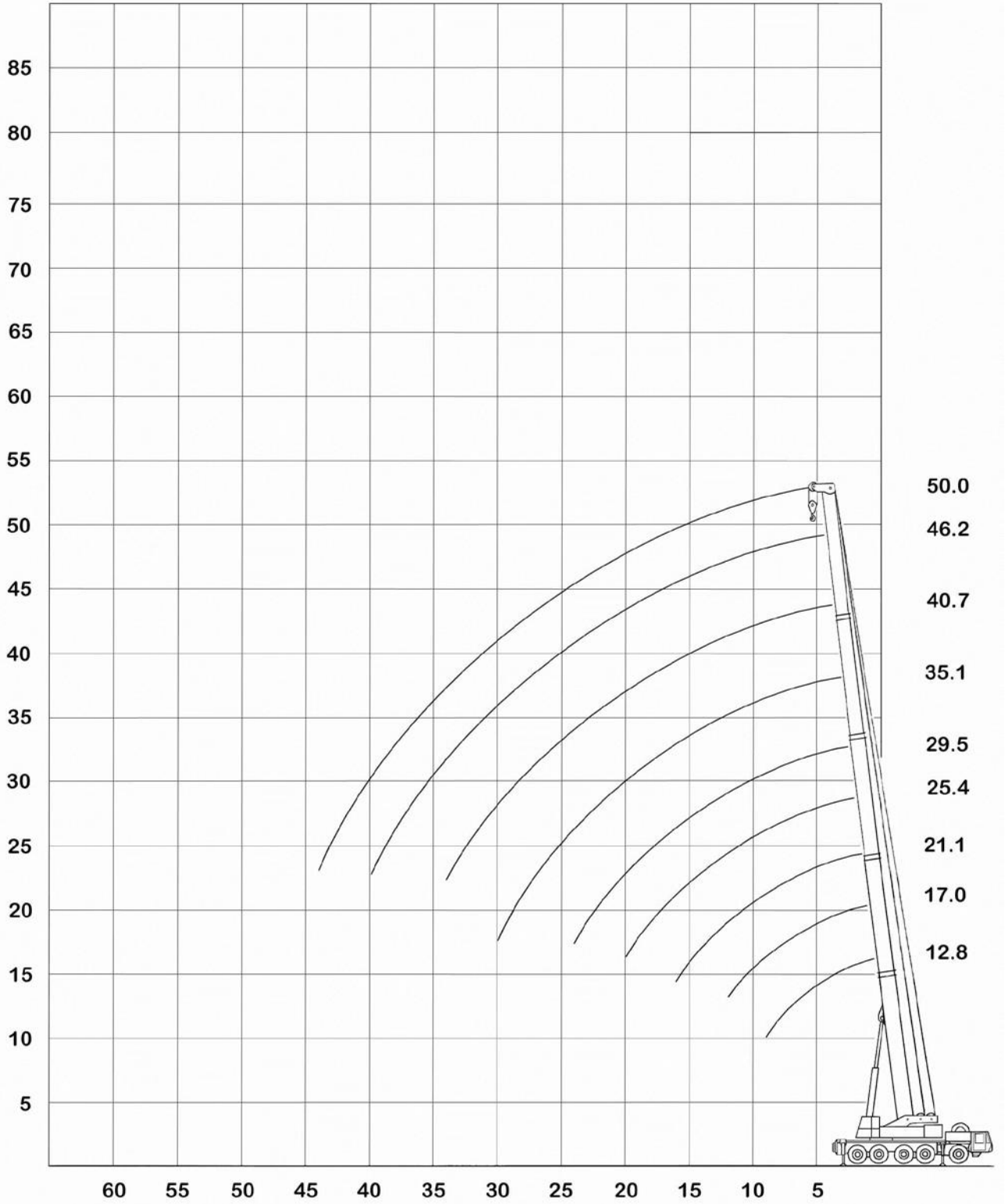
12.8m - 50.0m



360°



0t - 44t





DEMAG AC435 150-TONNE



12.8m - 50.0m



DIN 15019.2



360°



44.0t



MAIN BOOM

METRES	12.8*	12.8	17.0*	21.1*	25.4*	29.5*	35.2	40.7	46.2	50.0
2.8	150.0									
3.0	135.0									
3.5		120.0	80.0	80.0						
4.0		110.0	80.0	80.0	70.0	55.0				
4.5		102.0	80.0	80.0	68.0	55.0				
5.0		95.8	80.0	80.0	64.0	55.0	35.0			
6.0		83.5	80.0	77.5	59.0	53.5	35.0	33.5		
7.0		72.6	71.5	70.3	54.0	49.5	35.0	32.5	25.0	
8.0		63.3	62.1	61.4	49.5	46.5	35.0	31.3	25.0	20.0
9.0		55.3	54.7	54.0	46.0	43.5	35.0	30.2	25.0	20.0
10.0			48.5	47.8	42.5	40.5	34.0	28.9	24.6	19.8
12.0			38.8	38.1	36.5	35.0	30.2	26.6	23.0	19.4
14.0				30.3	31.0	30.5	27.0	24.4	21.4	18.6
16.0				24.3	24.9	24.7	24.2	22.2	19.6	17.7
18.0					20.5	20.3	21.8	20.2	17.8	16.6
20.0					17.1	16.9	19.2	18.2	16.2	15.4
22.0						14.3	16.5	16.6	14.8	14.2
24.0						12.1	14.3	14.4	13.5	13.0
26.0							12.5	12.6	12.3	11.8
28.0							11.0	11.1	11.1	10.8
30.0							9.7	9.8	9.7	9.6
32.0								8.6	8.6	8.4
34.0								7.6	7.5	7.4
36.0									6.7	6.5
38.0									5.9	5.7
40.0									5.2	5.0
42.0										4.4
44.0										3.8
Boom Extension Sequence in %										
Tele I	0	0	45	90	68	90	60	75	90	100
Tele II	0	0	0	0	68	90	60	75	90	100
Tele III	0	0	0	0	0	0	60	75	90	100
Tele IV	0	0	0	0	0	0	60	75	90	100

Remarks - “ = Tele pinned | Duties over 100t with heavy-lift attachment only | Special boom extension sequence