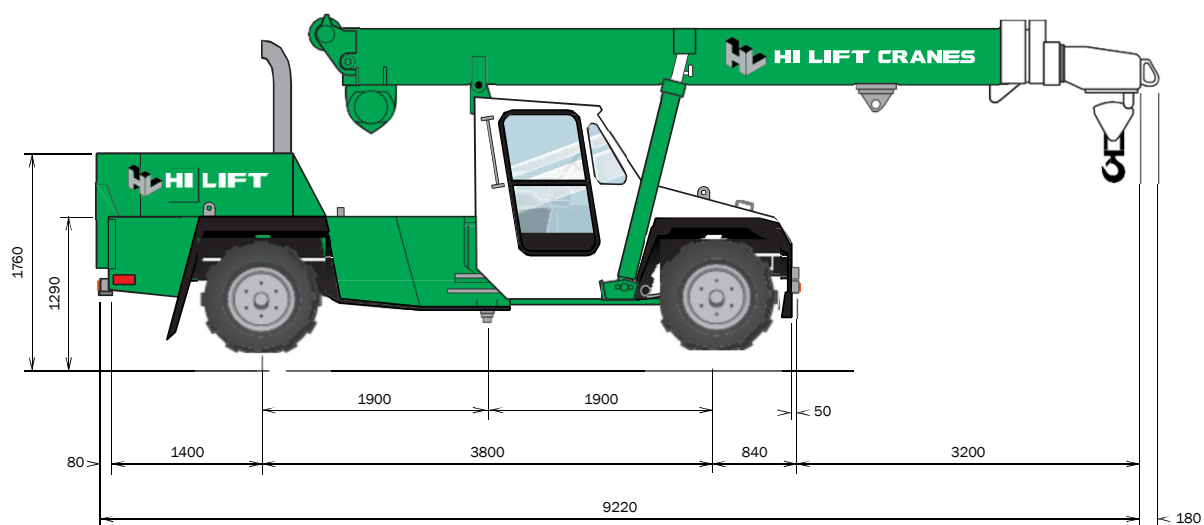




FRANNA AT14 14-TONNE

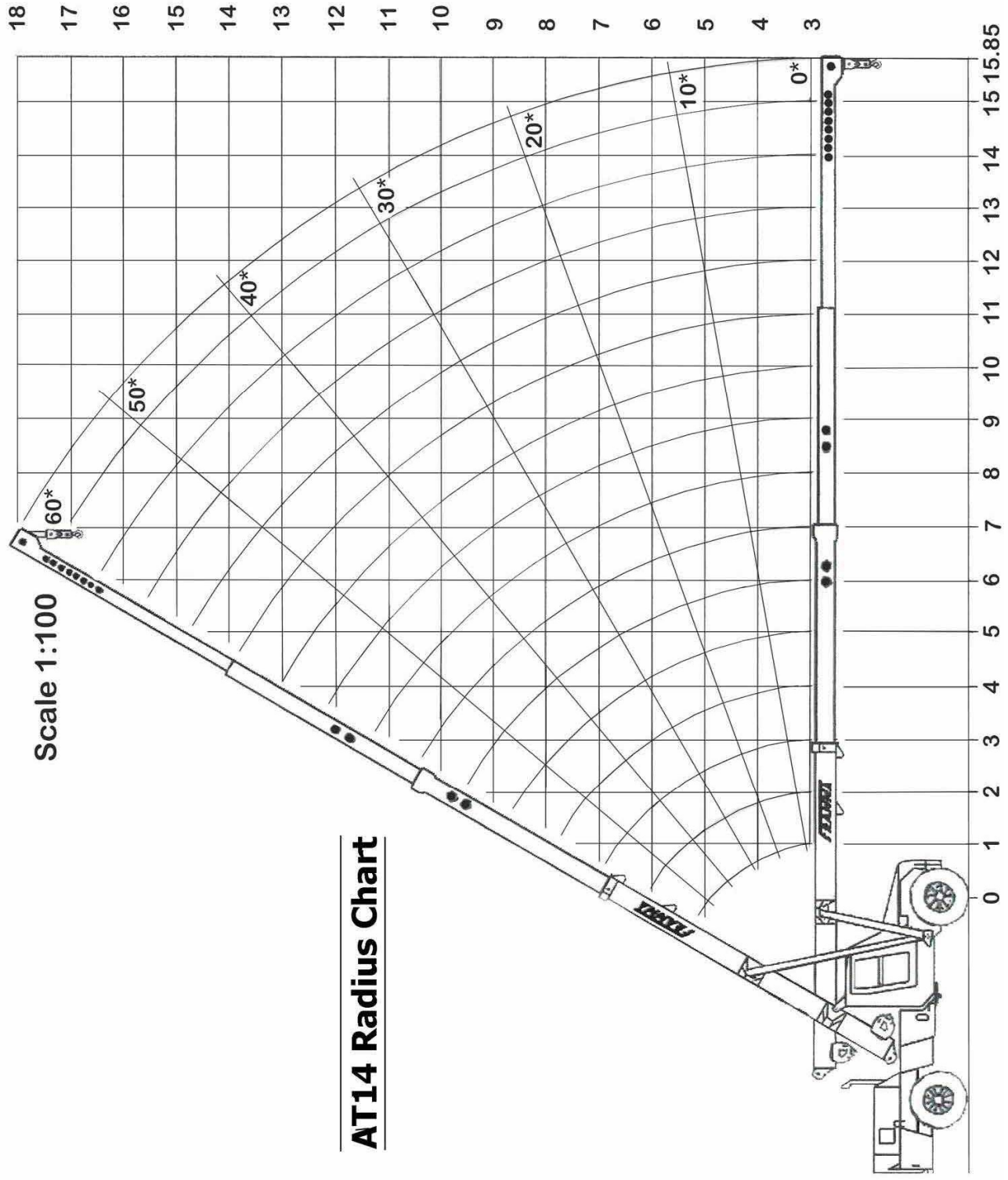
FRANNA AT14 14-TONNE



FRANNA AT14 14-TONNE DIMENSIONS	
OVERALL HEIGHT	2.89m
OVERALL WIDTH	2.45m
OVERALL LENGTH (OF CARRIER)	6.0m



FRANNA AT14 14-TONNE



Scale 1:100

AT14 Radius Chart

BOOM LENGTH IN METERS - Manual Extension Retracted

MANUAL

ANGLE	BOOM LENGTH IN METERS - Manual Extension Retracted																	MANUAL			
	5.56	6.00	6.50	7.00	7.50	8.00	8.50	9.00	9.50	10.00	10.50	11.00	11.50	12.00	12.50	13.00	13.50		13.85	16.85	17.90
60°	*				7.5	7.5	7.5	7.5	7.5	7.5	6.9	5.8	5.2	4.8	4.4	4.1	3.8	3.6	2.3	1.9	
	#			7.5	7.5	7.5	7.5	7.5	7.4	6.8	5.8	5.2	4.8	4.4	4.1	3.8	3.6	2.3	1.9		
	m			1.28	1.53	1.78	2.03	2.28	2.53	2.78	3.03	3.28	3.53	3.78	4.03	4.28	4.53	4.70	6.20	6.73	
50°	*	7.5	7.5	7.5	7.5	7.5	7.5	7.5	7.5	7.5	7.5	7.5	7.5	7.5	7.5	7.5	7.5	7.5	7.5	7.5	7.5
	#	7.5	7.5	7.5	7.5	7.5	7.5	7.5	7.5	7.0	6.3	5.6	5.1	4.7	4.3	3.9	3.6	3.4	3.0	2.8	2.7
	m	1.43	1.65	1.97	2.30	2.62	2.94	3.26	3.58	3.90	4.22	4.54	4.87	5.19	5.51	5.83	6.15	6.47	6.70	8.63	9.30
40°	*	7.5	7.5	7.5	7.2	6.3	5.7	5.1	4.6	4.2	3.9	3.6	3.3	3.1	2.9	2.7	2.5	2.3	2.2	2.3	2.2
	#	7.5	7.5	7.4	6.4	5.7	5.0	4.5	4.1	3.7	3.4	3.2	2.9	2.7	2.5	2.3	2.2	2.3	2.2	2.1	2.0
	m	2.15	2.42	2.80	3.18	3.57	3.95	4.33	4.72	5.10	5.48	5.86	6.25	6.63	7.01	7.40	7.78	8.16	8.43	10.73	11.53
30°	*	7.5	7.5	6.5	5.7	5.1	4.6	4.1	3.7	3.4	3.1	2.9	2.7	2.5	2.3	2.2	2.0	1.9	1.8	1.4	1.2
	#	7.5	6.8	5.8	5.1	4.5	4.1	3.7	3.3	3.0	2.8	2.6	2.4	2.2	2.0	1.9	1.8	1.7	1.6	1.2	1.1
	m	2.74	3.05	3.48	3.91	4.35	4.78	5.21	5.64	6.08	6.51	6.94	7.38	7.81	8.24	8.68	9.11	9.54	9.84	12.44	13.35
20°	*	7.2	6.5	5.6	4.9	4.4	3.9	3.6	3.3	3.0	2.7	2.5	2.3	2.2	2.0	1.9	1.8	1.6	1.6	1.2	1.1
	#	6.5	5.8	5.0	4.4	3.9	3.5	3.2	2.9	2.6	2.4	2.2	2.0	1.9	1.8	1.6	1.5	1.4	1.4	1.0	0.9
	m	3.19	3.52	3.99	4.46	4.93	5.40	5.87	6.34	6.81	7.28	7.75	8.22	8.69	9.16	9.63	10.10	10.57	10.90	13.72	14.70
10°	*	6.5	5.9	5.1	4.5	4.0	3.6	3.3	3.0	2.7	2.5	2.3	2.1	2.0	1.9	1.7	1.6	1.5	1.4	1.1	1.0
	#	5.9	5.3	4.6	4.0	3.6	3.2	2.9	2.6	2.4	2.2	2.0	1.9	1.7	1.6	1.5	1.4	1.3	1.2	0.9	0.9
	m	3.48	3.83	4.32	4.81	5.30	5.80	6.29	6.78	7.27	7.77	8.26	8.75	9.24	9.74	10.23	10.72	11.21	11.56	14.51	15.51
0°	*	6.3	5.7	4.9	4.4	3.9	3.5	3.2	2.9	2.7	2.4	2.2	2.1	1.9	1.8	1.7	1.6	1.5	1.4	1.1	1.0
	#	5.6	5.1	4.4	3.9	3.5	3.1	2.8	2.6	2.3	2.0	1.8	1.7	1.6	1.4	1.3	1.3	1.2	0.9	0.8	
	m	3.60	3.95	4.45	4.95	5.45	5.95	6.45	6.95	7.45	7.95	8.45	8.95	9.45	9.95	10.45	10.95	11.45	11.80	14.80	15.85

KEY	
*	S.W.L in Kg for slew angles of 10 deg; OR LESS either side of straight ahead.
#	S.W.L in Kg for slew angles of 10 deg; OR GREATER either side of straight ahead.
m	Radius in metres.



ANNOL-4T 4TLTA ANNARA